

# International Scholarships 2025 / 2026

Centre of International Programmes  
and Alumni

✉ [exchange@sze.hu](mailto:exchange@sze.hu)

🌐 [ipc.sze.hu](http://ipc.sze.hu)



# Website: [https://ipc.sze.hu/en\\_GB/home](https://ipc.sze.hu/en_GB/home)



HOME | PANNÓNIA SCHOLARSHIP PROGRAMME | EXCHANGE MOBILITIES | E+INTERNATIONAL CREDITMOBILITY | INTERNATIONAL RELATIONS  
| SHORT-TERM STUDENT PROGRAMMES | FULL DEGREE PROGRAMMES | CONTACTS

## CONTACT

Centre of International Programmes and Alumni

H-9023 Győr, Egyetem tér 1.  
(Administration Building, 103 Office)  
+36 96/613-560  
[exchange@sze.hu](mailto:exchange@sze.hu)

### OFFICE HOURS

	AM	PM
Monday	10:00-12:00	12:30-14:00
Tuesday	10:00-12:00	12:30-14:00
Wednesday	10:00-12:00	12:30-14:00
Thursday	10:00-12:00	12:30-14:00
Friday	10:00-11:00	12:30-14:00

 Find us on  
**Facebook**

## QUICK MENU

## CENTRE OF INTERNATIONAL PROGRAMMES AND ALUMNI

Széchenyi István University continually strives to widen the scope of its international activities. To support this aim, the University founded the **Centre of International Programmes and Alumni (CIPA)**, which under the direction of the Vice-President for International Affairs and Strategic Relations, provides a comprehensive framework for the administration of international academic affairs, including collaboration with partner institutions in the form of bi- and multilateral agreements, coordination of mobility programmes, the advertising and promotion of the more than 50 English-taught academic programmes as well as the major cultural and academic events organised within the University's international community. CIPA's role naturally also encompasses all aspects of administrative support to the body of international students at the University.





# PANNÓNIA

## Scholarship Programme

<http://ipc.sze.hu>



**SCAN ME**

Further information is available on the website:  
[Pannonia Scholarship Programme](http://ipc.sze.hu)



# Duration of stay abroad



## Long-term mobility: (2-6 months) for

- Studies
- Internships
- Research
- Excellence Scholarship opportunity  
(Institutions ranked in the TOP 250)

## Short-term mobility: (2-30 days)

- Research
- Active participation in conferences,  
summer school, etc.
- Individual programmes  
(announced on our website or on your own)



# Destinations

**European or non-European Institution aligned with the student's studies.**

- **Study mobility:**

List of international partners:

<https://ipc.sze.hu/international-relations-sze>

- **Research mobility:**

Inter-institutional agreement is not required

- **Internship mobility:**

Assistance from programme supervisor, coordinator, and academic staff:

[https://ipc.sze.hu/en\\_GB/help-with-finding-traineeship-abroad](https://ipc.sze.hu/en_GB/help-with-finding-traineeship-abroad)



## CONTACT



Centre of International Programmes  
and Alumni

H-9023 Győr, Egyetem tér 1.  
(Administration Building, 103 Office)

+36 96/613-560

[exchange@sze.hu](mailto:exchange@sze.hu)

### OFFICE HOURS

	AM	PM
<b>Monday</b>	10:00-12:00	12:30-14:00
<b>Tuesday</b>	10:00-12:00	12:30-14:00
<b>Wednesday</b>	10:00-12:00	12:30-14:00
<b>Thursday</b>	10:00-12:00	12:30-14:00
<b>Friday</b>	10:00-11:00	12:30-14:00

# INTERNATIONAL RELATIONS



## [LIST OF INTERNATIONAL PARTNERS OF SZÉCHENYI ISTVÁN UNIVERSITY \(12.02. 2025\)](#)

If the partner institution you choose terminates the contract in the meantime, you will have the opportunity to select a new partner institution.



## CONTACT



# HELP WITH FINDING TRAINEESHIP ABROAD

Centre of International Programmes and Alumni

H-9023 Győr, Egyetem tér 1.  
(Administration Building, 103 Office)  
+36 96/613-560  
[exchange@sze.hu](mailto:exchange@sze.hu)

### OFFICE HOURS

	AM	PM
<b>Monday</b>	10:00-12:00	12:30-14:00
<b>Tuesday</b>	10:00-12:00	12:30-14:00
<b>Wednesday</b>	10:00-12:00	12:30-14:00
<b>Thursday</b>	10:00-12:00	12:30-14:00
<b>Friday</b>	10:00-11:00	12:30-14:00



## QUICK MENU



UNIVERSITY'S HOMEPAGE

## Help with Finding Traineeship Abroad

If you are seeking a Traineeship, the following websites provide a selection of companies that welcome students for such opportunities. It is strongly advised to carefully review the terms and conditions of intermediary companies before making any commitments.

The Departments are also available to assist you in your search for a suitable traineeship.

Additionally, please regularly monitor the news for updates on current opportunities.

# Scholarship rates 🏆

- Scholarship
  - Long-term mobility: 350,000-400,000 HUF/month
  - Short-term mobility (PhD): 30,000-35,000 HUF/day
- Dependent on destination and type of mobility
- Allowance is calculated daily and determined upon contract signing.
- It may not cover all expenses





# Destination Countries:

## Group I:

Austria, Belgium, Denmark, Finland, France, Netherlands, Ireland, Iceland, Liechtenstein, Luxembourg, Germany, Norway, Sweden, Switzerland, United Kingdom, United States, Canada, Australia, New Zealand, Hong Kong, Japan, South Korea, Macau, Singapore, Taiwan, Andorra, Israel, Monaco.

## Group II:

Bosnia and Herzegovina, Kosovo, Montenegro, Bulgaria, Czech Republic, Estonia, Greece, Spain, Croatia, Italy, Cyprus, Latvia, Lithuania, Malta, Poland, Portugal, Romania, Slovenia, Slovakia, North Macedonia, Serbia, Armenia, Georgia, Moldova, Syria, Bangladesh, Bhutan, Cambodia, China, Laos, Maldives, Myanmar, Nepal, Pakistan, Sri Lanka, Afghanistan, Kyrgyzstan, Tajikistan, Turkmenistan, Uzbekistan, Iraq, Yemen, Russia, Ukraine.

## Group III:

Albania, Azerbaijan, Bahrain, Brunei, United Arab Emirates, Philippines, India, Indonesia, Iran, Jordan, Qatar, Kazakhstan, Lebanon, Mongolia, Malaysia, Oman, Saudi Arabia, Thailand, Turkey, Vietnam, Colombia, Mexico, Algeria, Angola, South Africa, Egypt, Libya, Morocco, Namibia, Nigeria, Tunisia, Argentina, Brazil, Chile, Peru.



Proposed Insured's Name:  
(Please use capital letters)

Birth Date: 01 January 2016 Gender: Male

Address: \_\_\_\_\_ Email Address: \_\_\_\_\_

Phone Number: \_\_\_\_\_ Social Security Number: \_\_\_\_\_

ID Number: \_\_\_\_\_

Status:  Single  Married  Divorced  Other

Occupation: \_\_\_\_\_ Are you a retiree?  Yes  No

# Application







# Application Process

## Online application form:



QR: Application form

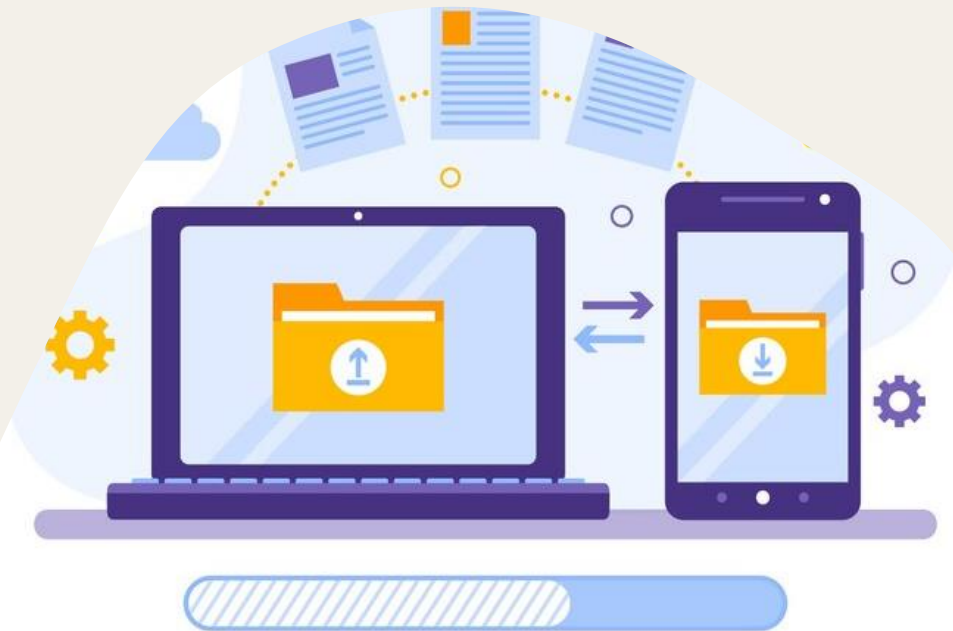


Required documents to upload:

- CV  
In the language of host institution/company
- Motivation letter

**Deadline: Sunday, 16th March 2025, 24:00**

Supplementary applications and continuous internship/short-term mobility applications are expected in autumn 2025.



# Selection criteria

- **Academic performance**  
(applicants compete within their field of study; programme averages between study programmes are not considered)
- **Language proficiency**  
(language certificate is not required)
- **Community engagement**  
(e.g., EHKB, EHÖK membership, official roles, association involvement, etc.)
- **Student achievements**  
(e.g., academic competitions, outstanding sports or artistic accomplishments, additional language skills beyond those listed)
- **Mentoring experience**



# Further Information



- SZE Centre of International Programmes and Alumni  
(Administration Building, Office 103) [exchange@sze.hu](mailto:exchange@sze.hu)
- [Departmental coordinators](#)
- website: [ipc.sze.hu/en\\_GB/home](http://ipc.sze.hu/en_GB/home)
- Facebook: [SZE Centre of International Programmes and Alumni](#)
- [University Student Foreign Affairs Committee](#)
- Experiences shared by students who have participated in [international mobility](#)





**We wish you  
a successful  
application!**